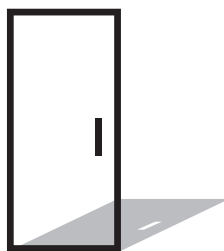


P O R T E S
FULLUM

Innovative glass door



Collection of doors with suspension plates

2020-2021 CATALOGUE

**A COMPANY
DEDICATED
TO GLAZIERS!**



Fullum Doors Inc., manufacturer-distributor established since 2005 in the glass doors and partitions markets for building interior applications, providing turnkey, innovative and value-added solutions, as well as suitable high-performance hardware, all pre-assembled in the factory to facilitate your work, combined with our diligent investment in our human capital's development and in research and development, are the foundations of our consistency in delivering quality products.

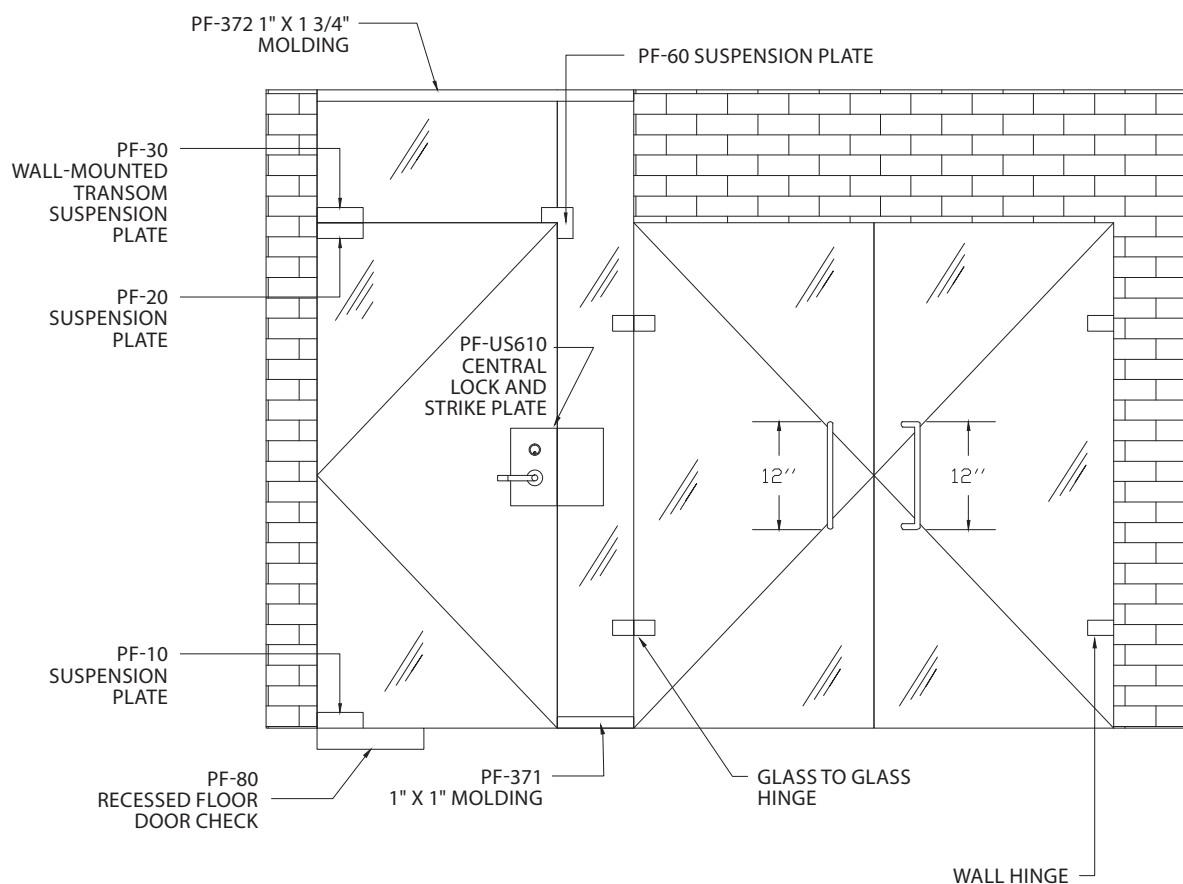
**innovation
performance
humanly thought out
added value**

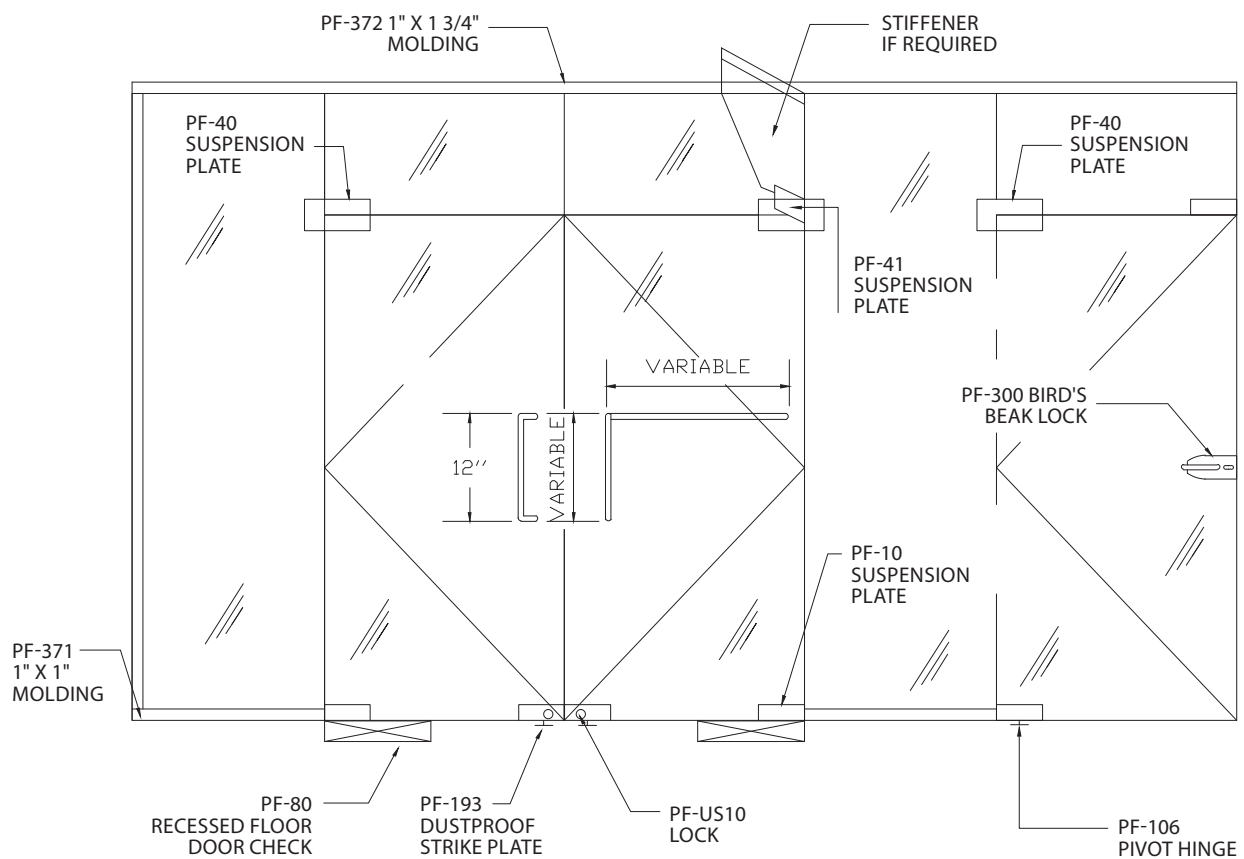


summary

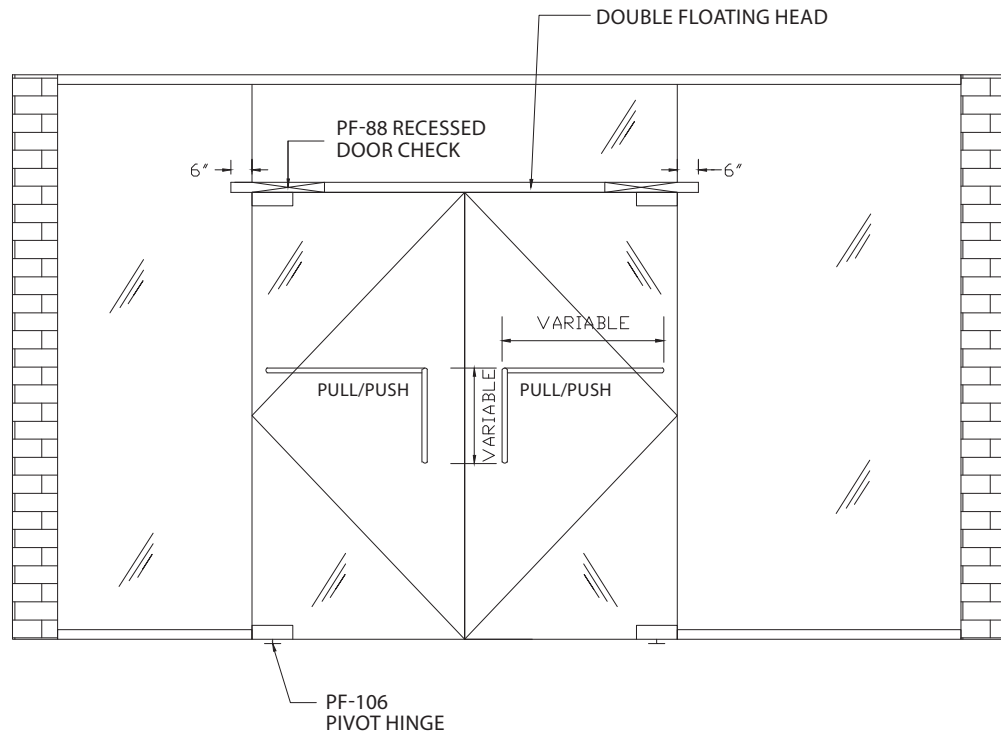
Doors with type A suspension plates	4
Section - Top recessed door check with top and bottom suspension plate	8
Section - Recessed floor door check with top and bottom suspension plate	9
Section - Top and bottom surface pivots with suspension plate	10
Section - Fixed partition with 1 3/4" x 4" tube at the top and 1" x 1" molding at the bottom	11
Section - Fixed partition with 1 3/4" x 1" molding at the top and 1" x 1" molding at the bottom	12
Examples of assemblies	13
Stiffener chart	14

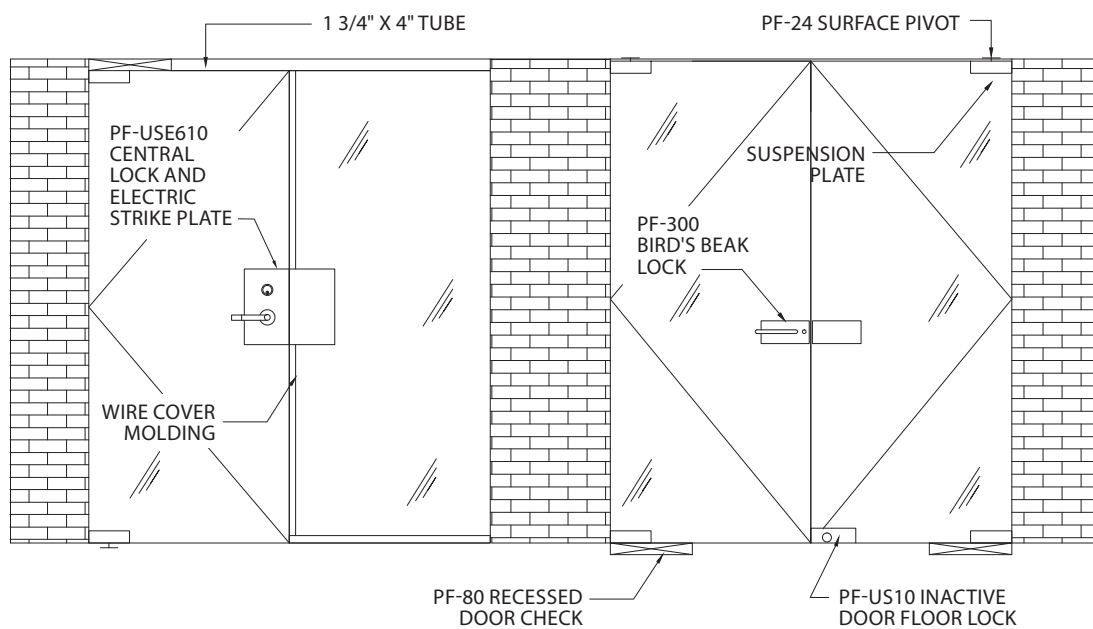
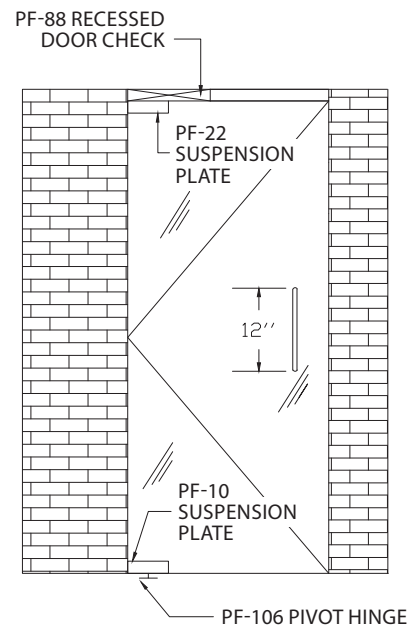
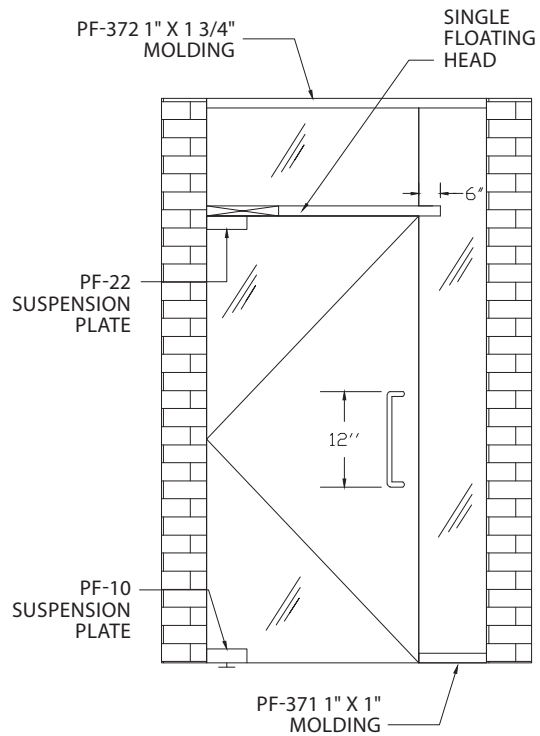
Doors with type A suspension plates



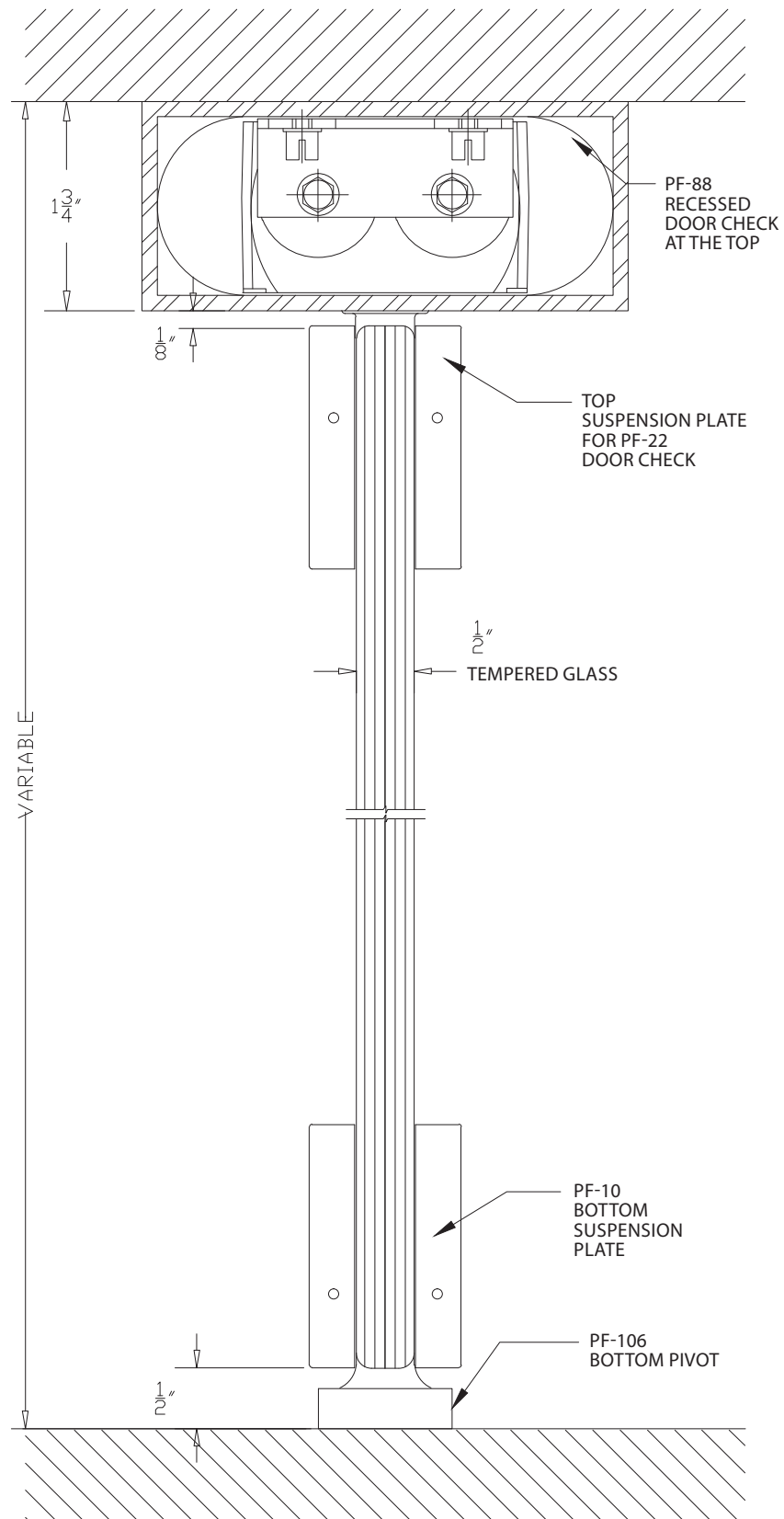


DOORS WITH TYPE A SUSPENSION PLATES

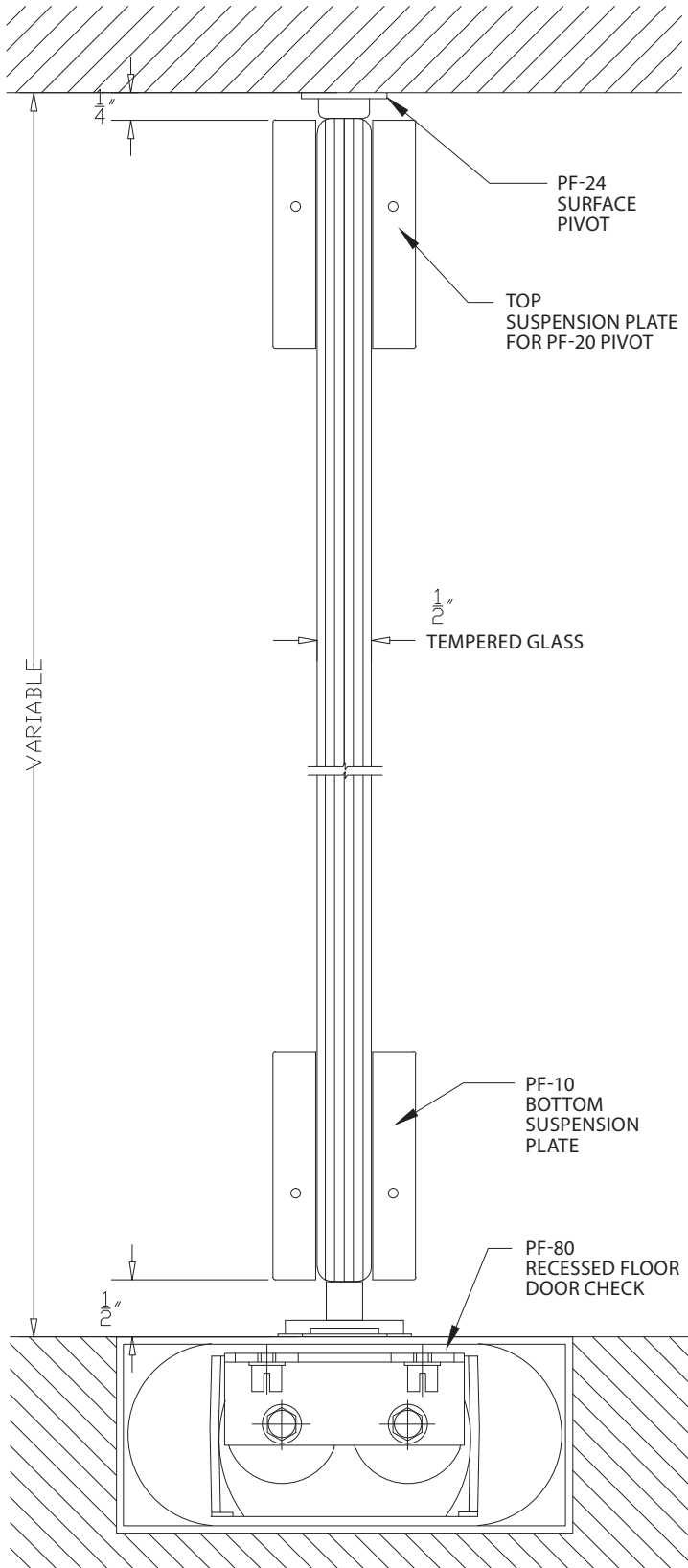




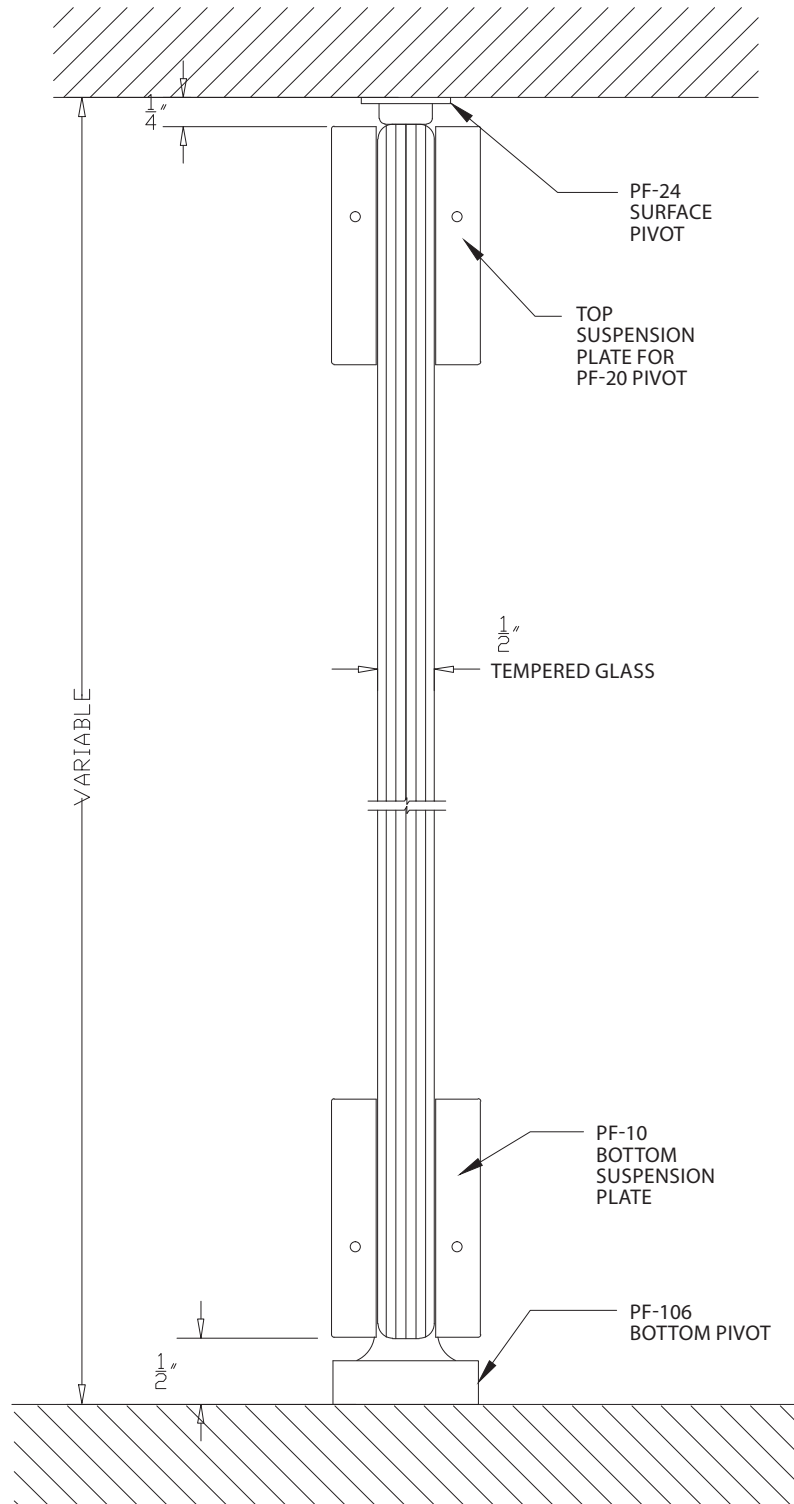
**SECTION - RECESSED
DOOR CHECK AT THE TOP
WITH SUSPENSION PLATE
AT TOP AND BOTTOM**



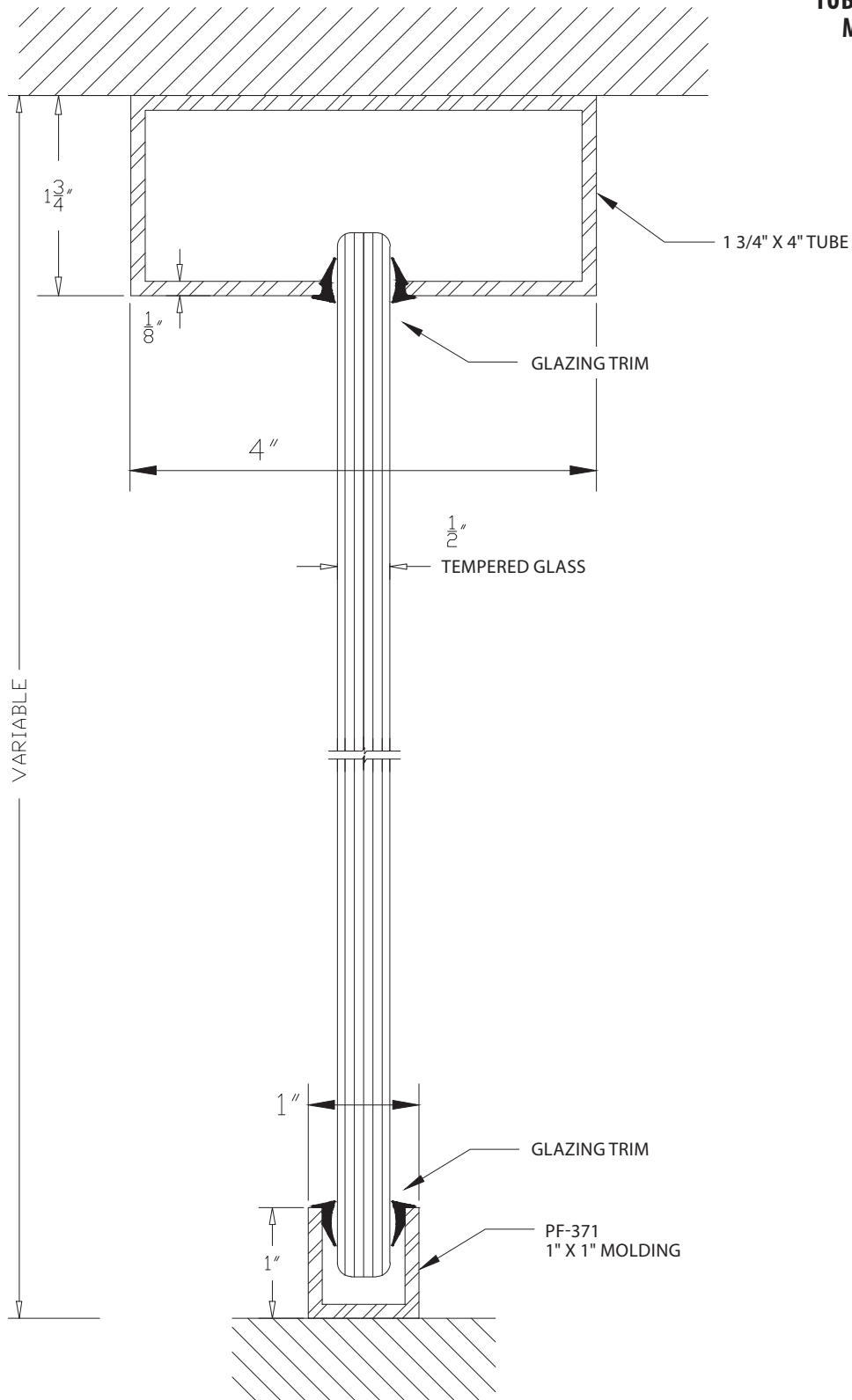
**SECTION - RECESSED
FLOOR DOOR CHECK
WITH TOP AND BOTTOM
SUSPENSION PLATE**



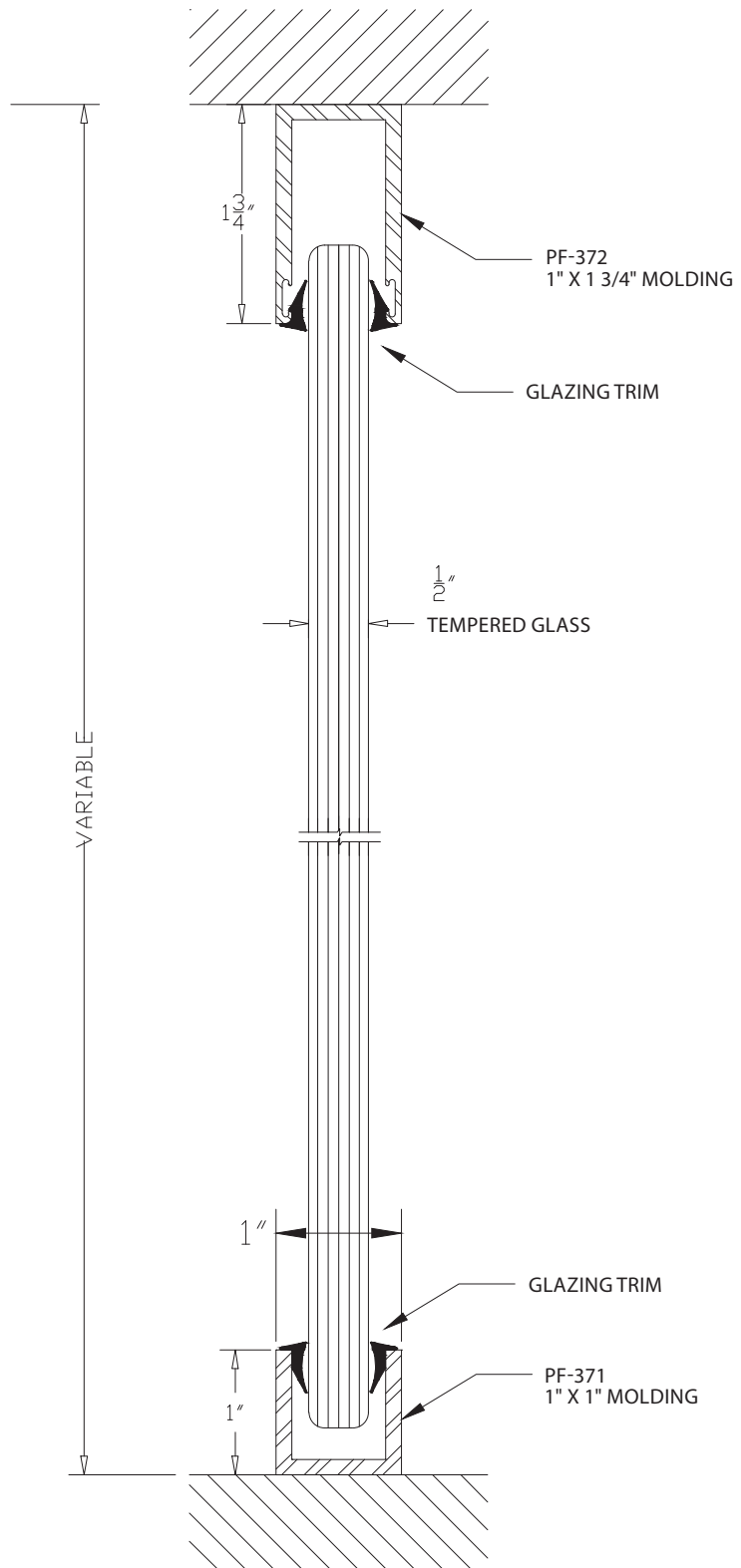
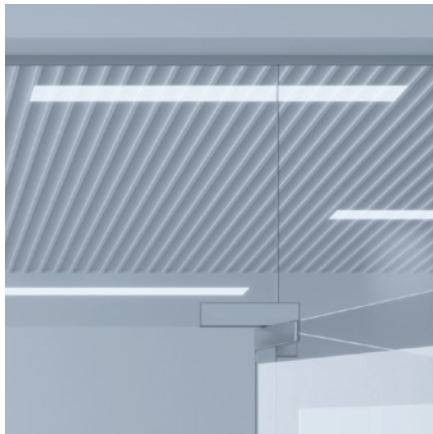
SECTION - TOP AND BOTTOM SURFACE PIVOTS WITH SUSPENSION PLATE



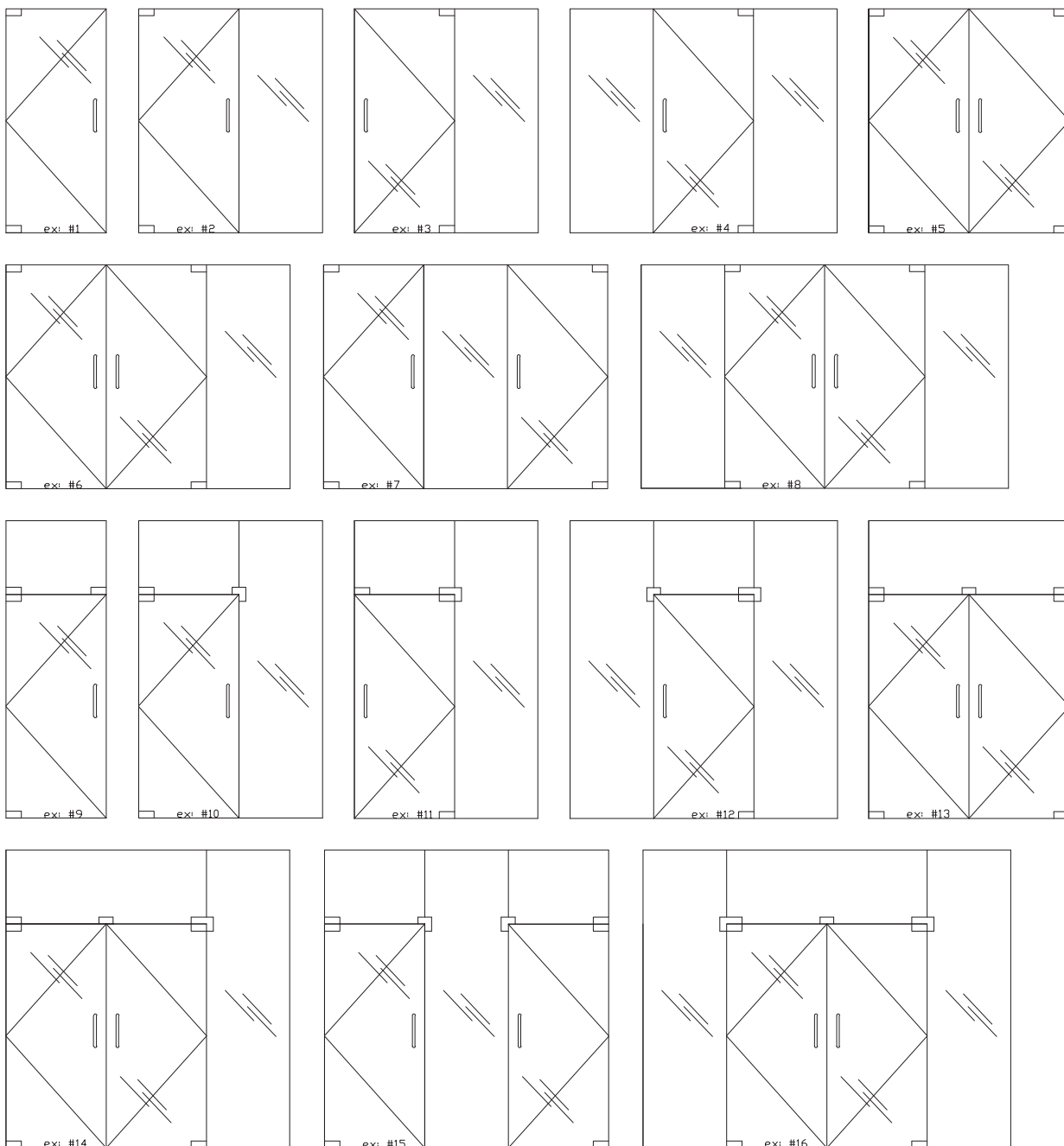
**SECTION - FIXED
PARTITION WITH 1 3/4" X 4"
TUBE AT THE TOP AND 1" X 1"
MOLDING AT THE BOTTOM**



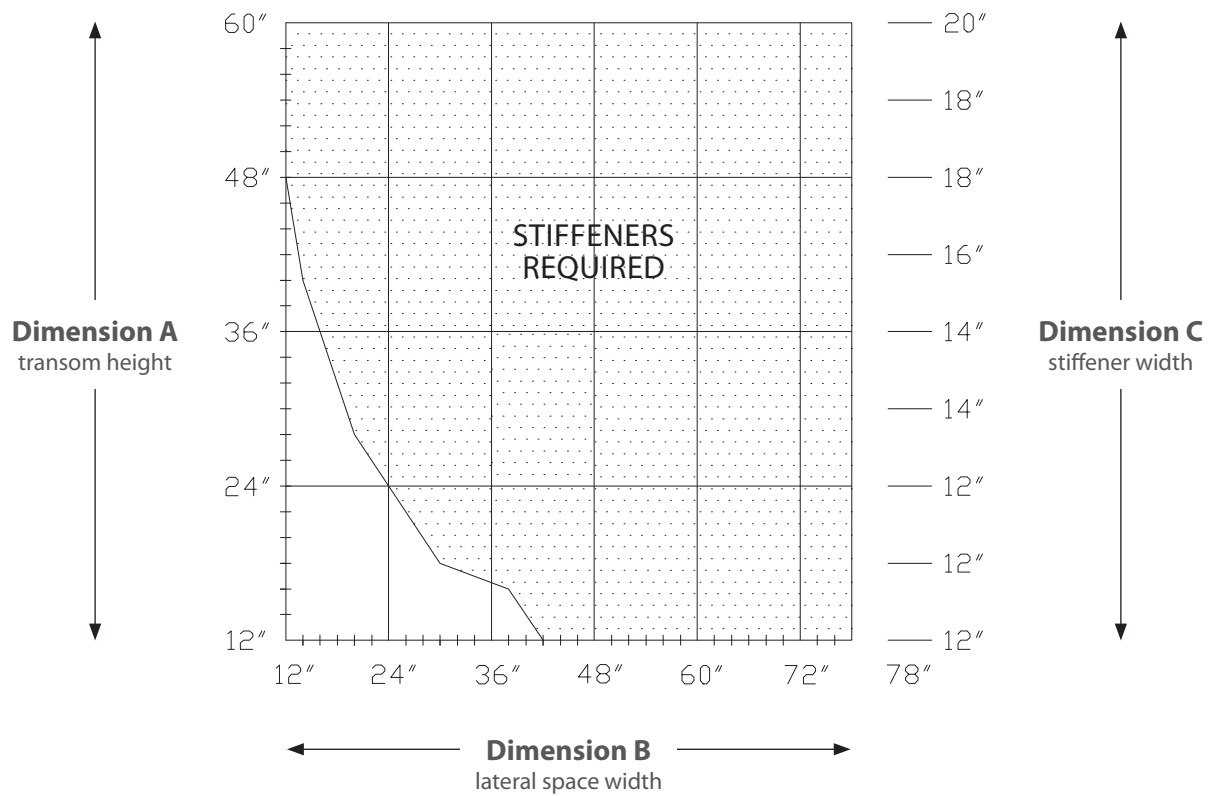
**SECTION - FIXED
PARTITION WITH 1 3/4" X 1"
MOLDING AT THE TOP AND 1" X 1"
MOLDING AT THE BOTTOM**



Examples of assemblies



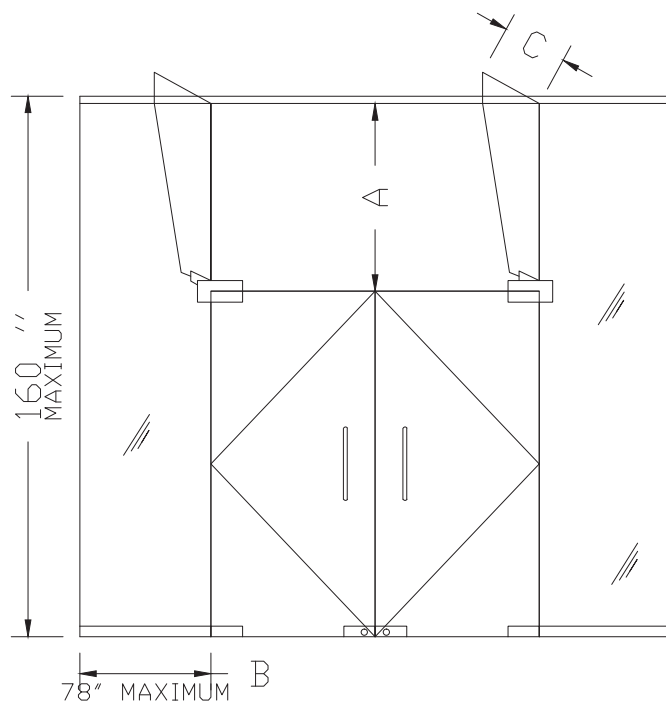
Stiffener chart



TO DETERMINE IF STIFFENERS ARE REQUIRED;

find the transom height (A) as well as the lateral space width (B) and locate their intersection of these two points on the graph.

Certain special conditions may require additional supports.





Our mission

Maintain leadership in the design, production and marketing of a wide range of highly innovative, high-quality products at competitive prices to support our glaziers' growth, while ensuring our employees' commitment, loyalty and skills.

Our values

The commitment to satisfy our customers, proactive continuous improvement, a passion for maintaining team spirit.

**PORTES
FULLUM
.COM**

LES PORTES FULLUM INC.

11485, avenue Philippe-Panneton, Montréal (Québec) H1E 4M1
Phone: 514 722-2010 | Fax: 514 722-4653