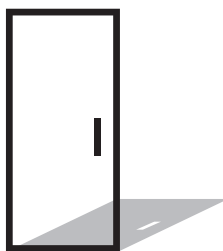


P O R T E S
FULLUM
Innovative glass door



Hardware collection

2020-2021 CATALOGUE

**A COMPANY
DEDICATED
TO GLAZIERS!**



Fullum Doors Inc., manufacturer-distributor established since 2005 in the glass doors and partitions markets for building interior applications, providing turnkey, innovative and value-added solutions, as well as suitable high-performance hardware, all pre-assembled in the factory to facilitate your work, combined with our diligent investment in our human capital's development and in research and development, are the foundations of our consistency in delivering quality products.

**innovation
performance
humanly thought out
added value**



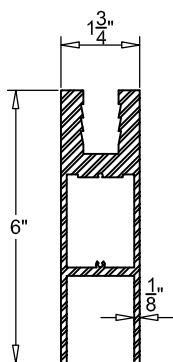
summary

List of hardware parts	4
Fullum profile types	5
Recessed door check at the top	6
Recessed floor door check	8
Suspension plates	9
Pivots	16
Lock for swinging doors	18
Roller latch and floor plate	19
Dustproof floor plate	20
Types of locks and strike plates	21
Tubular handles	22
General information	26

PARTS/ DESCRIPTION	Raw aluminum	Clear anodized	Black anodized	Polished brass	Brushed stainless steel	Polished stainless steel
PF-434 / Fixed shoe	✓	✓	✓	✓ *	✓	✓ *
PF-434SB / Sub-base	✓	✓	✓	✓ *	✓	✓ *
PF-435 / End plate	✓	✓	✓	✓ *	✓	✓ *
PF-500 / Top tube	✓	✓	✓	✓ *	✓	✓ *
PF-80 / Recessed floor door check				✓ *	✓	
PF-88 / Recessed door check at the top						
PF-8850 / Floor pivot					✓	
PF-24 / Top pivot					✓	
PF-20 / Suspension plate for top door pivot		✓	✓	✓ *	✓	✓ *
PF-40 / Plate for transom and lateral space + top pivot		✓	✓	✓ *	✓	✓ *
PF-30 / Transom holding plate including top pivot		✓	✓	✓ *	✓	✓ *
PF-71 / Panel for transom or lateral space with top pivot		✓	✓	✓ *	✓	✓ *
PF-10 / Suspension plate for door arm pivot		✓	✓	✓ *	✓	✓ *
PF-70 / Transom stopper for single or double door		✓	✓	✓ *	✓	✓ *
PF-22 / F-type door suspension plate recessed at the top		✓	✓	✓ *	✓	✓ *
PF-US10 / North American lock cylinder		✓	✓	✓ *	✓	✓ *
PFO-12X12 / 1" diameter tubular handle		✓ *	✓ *	✓ *	✓ *	✓ *
PFL / 1" diameter tubular handle		✓ *	✓ *	✓ *	✓ *	✓ *
PFD-12X12 / 1" diameter tubular handle		✓	✓	✓ *	✓	✓ *
PF-193 / Sliding bolt receiver				✓ *		✓
PF-304 / Bottom rail	✓ *					
PF-300 / Standard top rail	✓ *	✓ *	✓ *			
PF-300M / Modified top rail	✓ *	✓ *	✓ *			

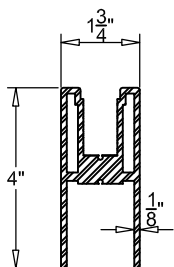
* On order only, not available in stock.

FULLUM PROFILE TYPES



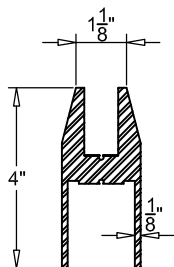
6" shoe

PF-634



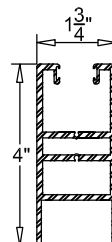
Door 4" shoe

PF-434



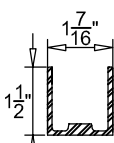
4" beveled shoe

PF-B434



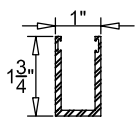
Fixed 4" shoe

PF-F434



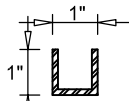
Sub-base

PF-F434SB



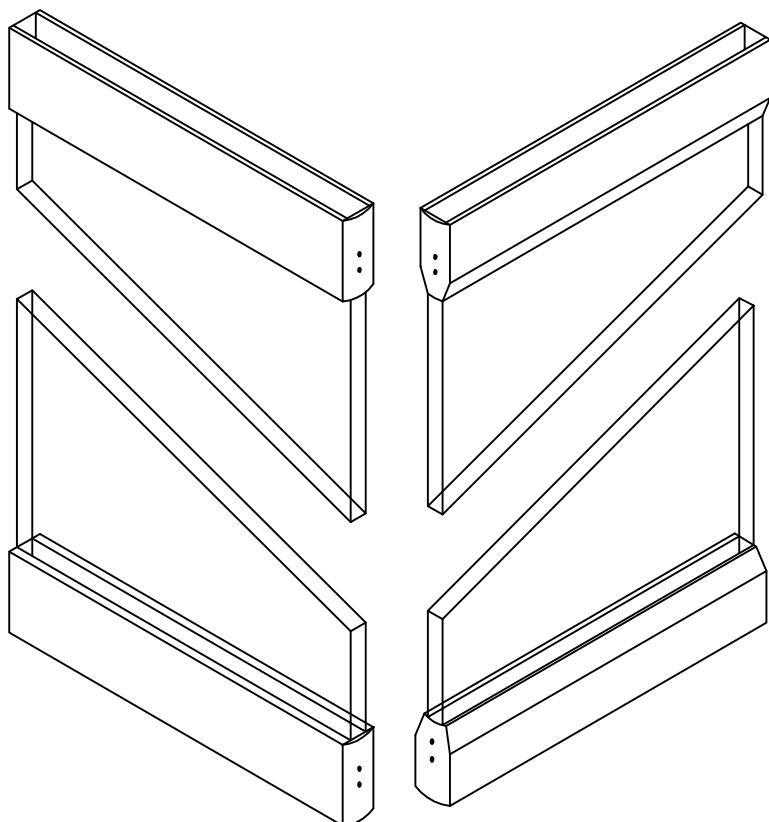
U-shaped molding

PF-372



U-shaped molding

PF-371



RECESSED DOOR CHECK AT THE TOP

Recessed door check at the top

Double-action, central pivot.

Option:

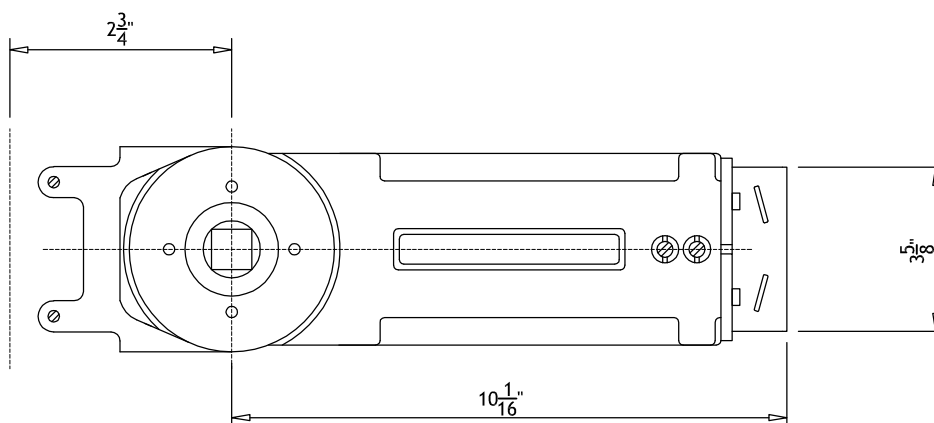
- With 90° or 105° HO retainer
- Without 90° or 105° NHO retainer

Other models are available on order.

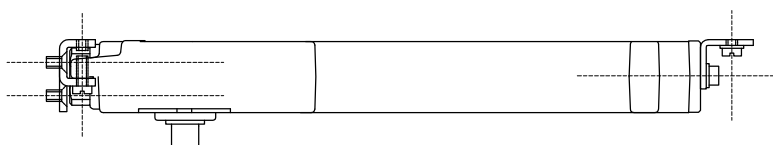
PF-88



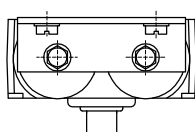
BOTTOM VIEW

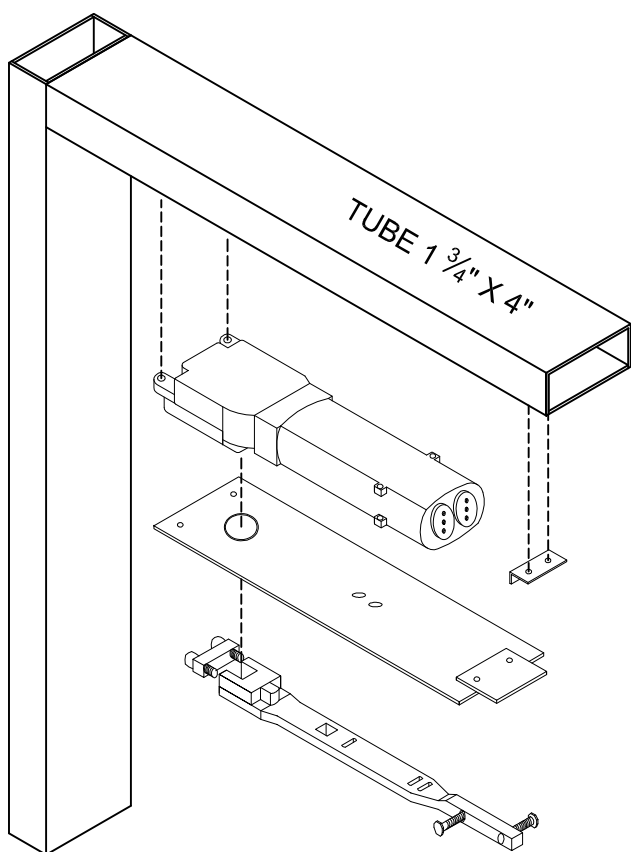


ELEVATION



SECTION VIEW





RECESSED DOOR CHECK AT THE TOP

Recessed door check at the top

*For a glass door up to 91 kg (200 lbs)
single or double-action with or without
retainer. 90° or 105° opening.
Other models are available on order.*

PF-88



RECESSED FLOOR DOOR CHECK

Recessed floor door check

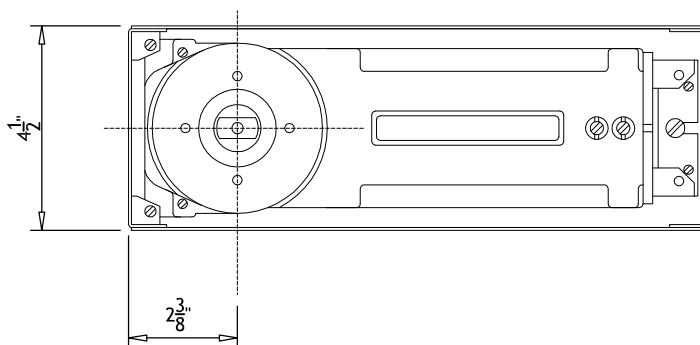
For a glass door up to 100 kg (225 lbs)
single or double-action with or without
retainer. 90° or 105° opening.

Other models are available on order.

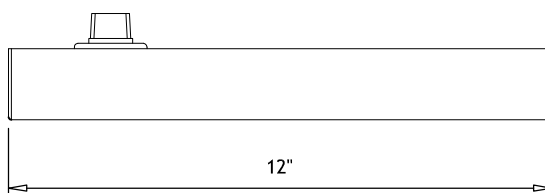
PF-80



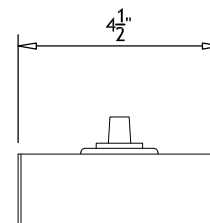
TOP VIEW



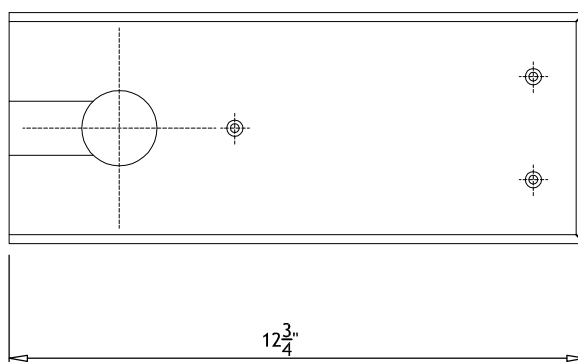
ELEVATION



REAR ELEVATION



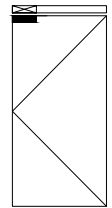
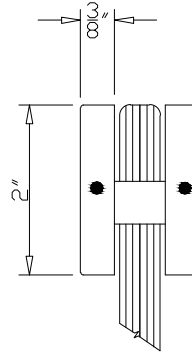
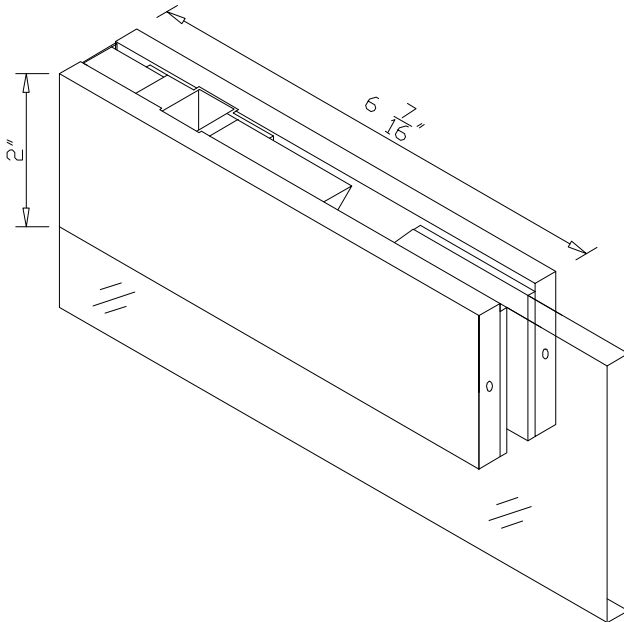
TOP VIEW
OF THE DOOR
CHECK PLATE



SUSPENSION PLATES

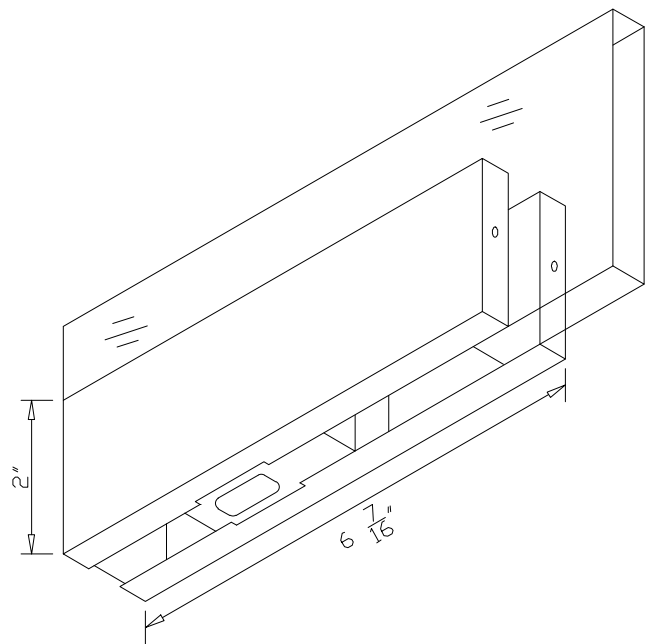
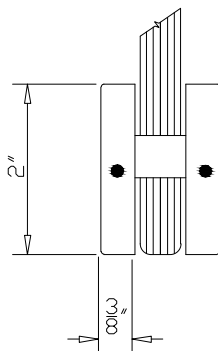
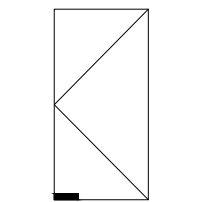
*Suspension plate for recessed
door check at the top*

PF-22



*Suspension plate for
bottom pivot or recessed
floor door check*

PF-10

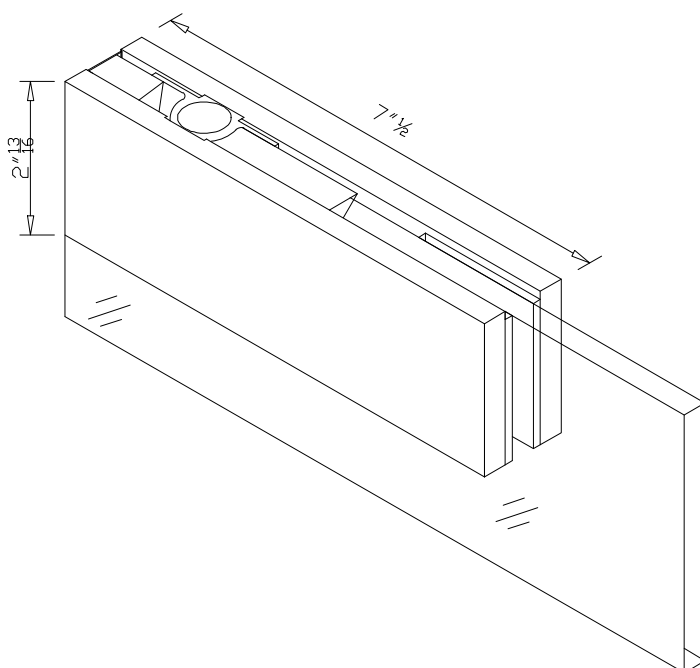
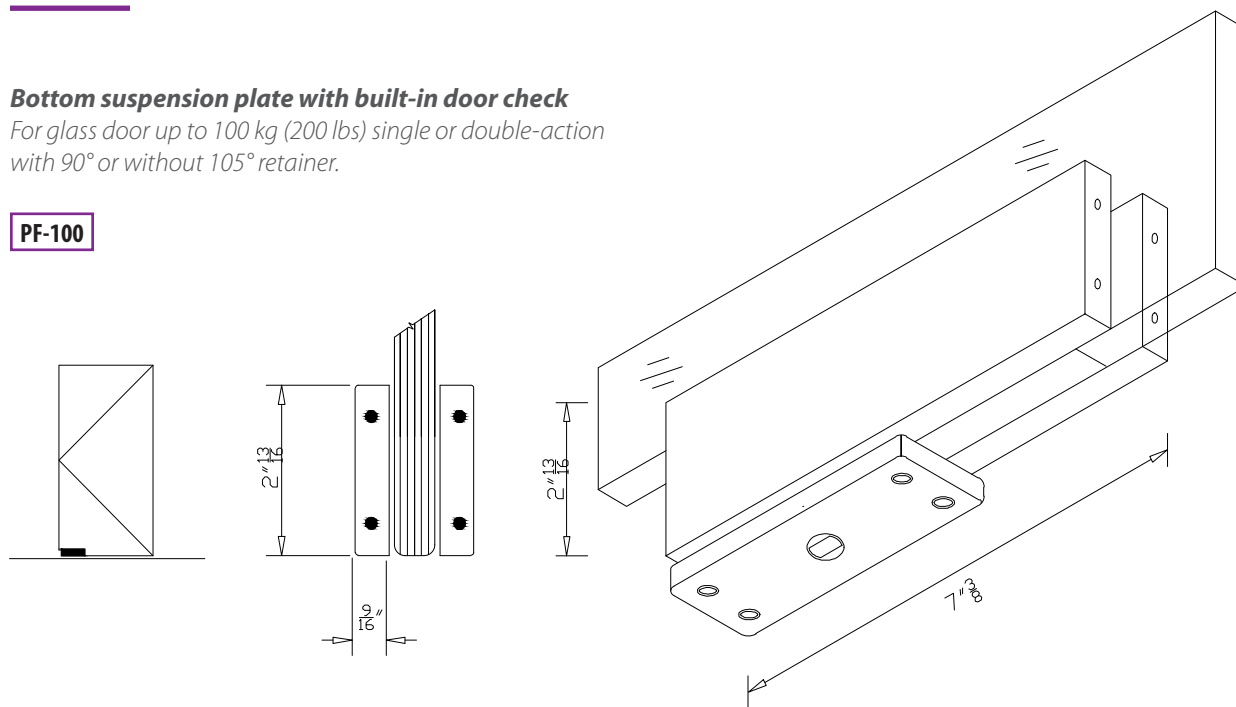


SUSPENSION PLATES

Bottom suspension plate with built-in door check

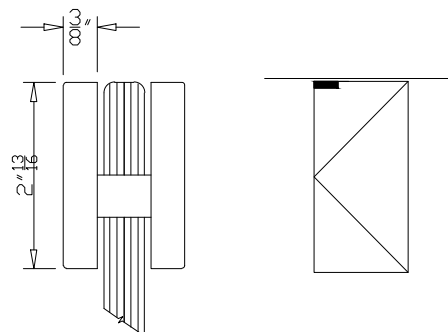
For glass door up to 100 kg (200 lbs) single or double-action with 90° or without 105° retainer.

PF-100



Top suspension plate for PF-100

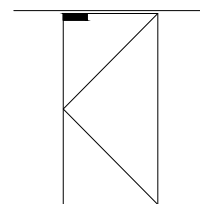
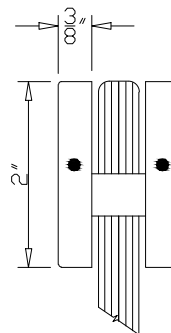
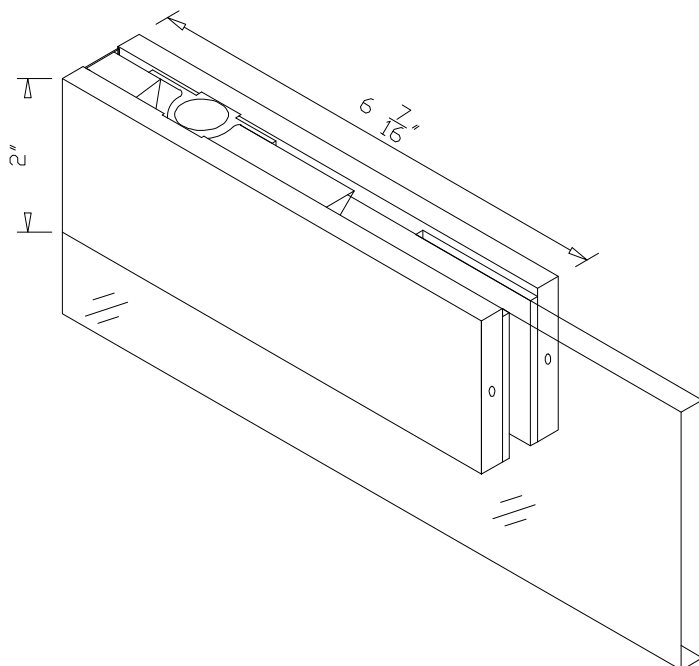
PF-121



SUSPENSION PLATES

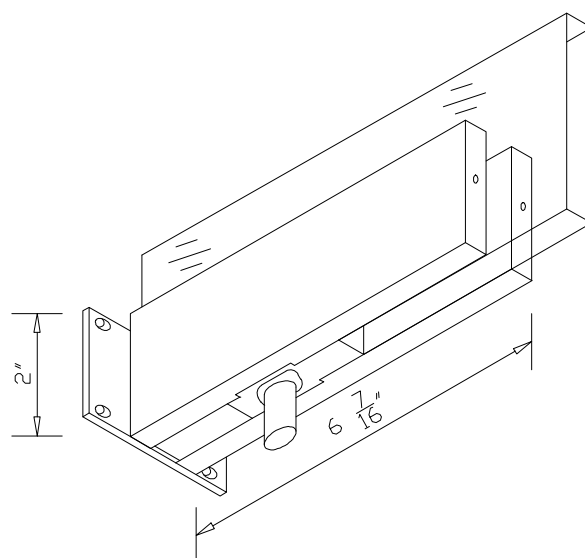
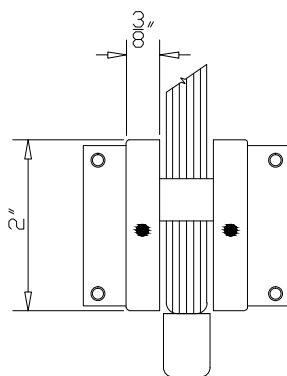
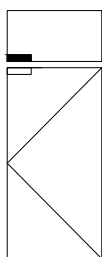
*Suspension plate
for top pivot*

PF-20



*Transom holding plate
including top pivot*

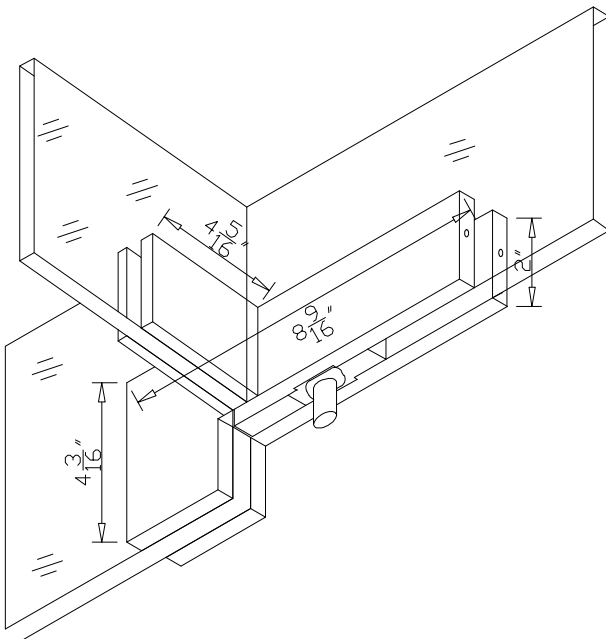
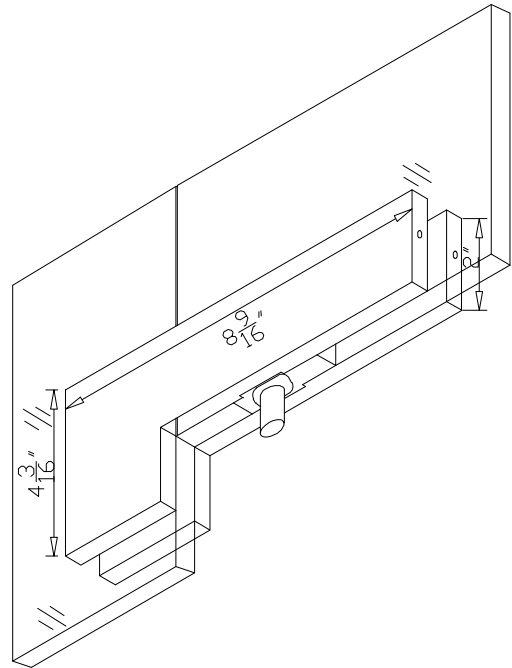
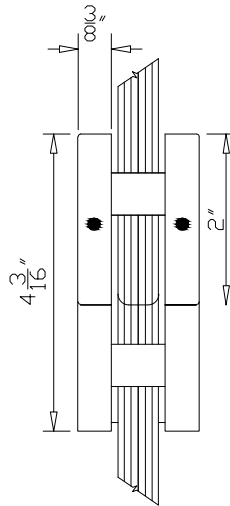
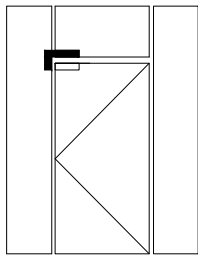
PF-30



SUSPENSION PLATES

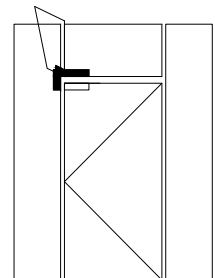
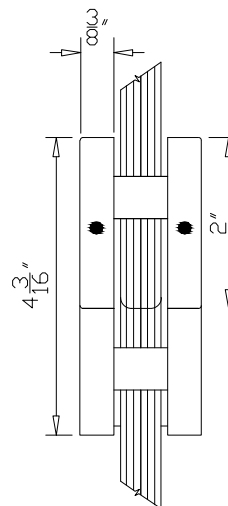
Transom and lateral space assembly plate including top pivot

PF-40



Stiffener transom and lateral space assembly plate including the top pivot

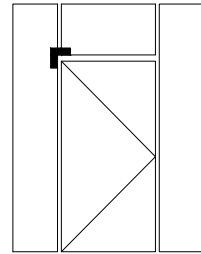
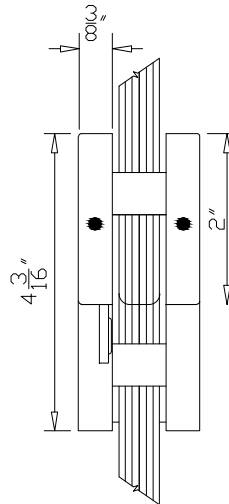
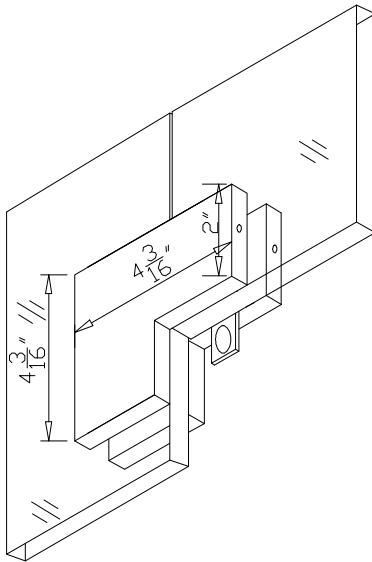
PF-41



SUSPENSION PLATES

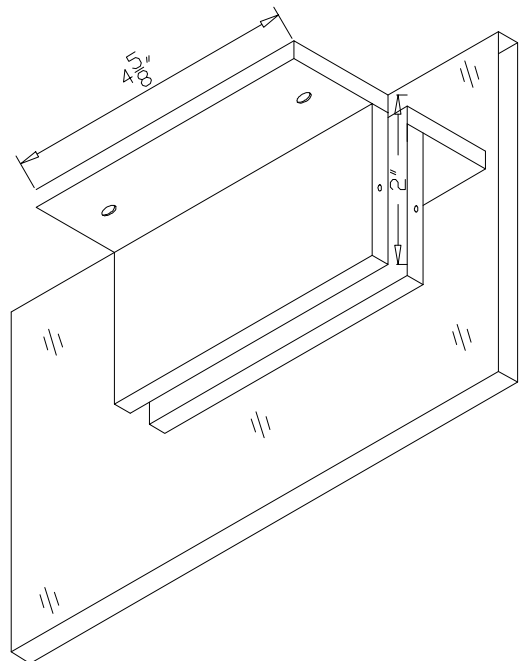
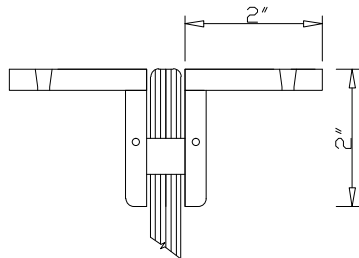
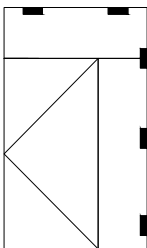
*Suspension plate for transom and
lateral space including door stop*

PF-60



*Holding plate for transom
or lateral space*

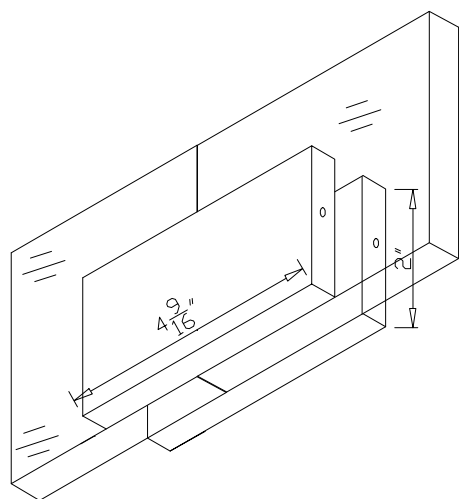
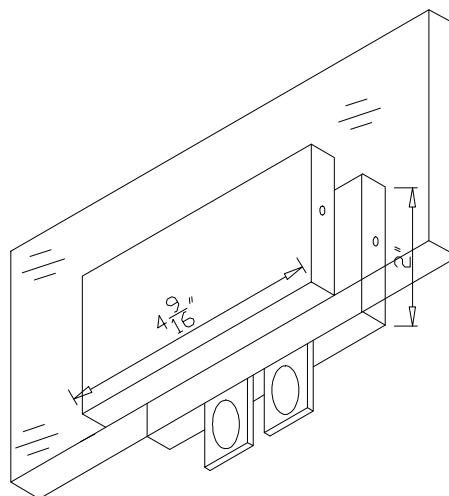
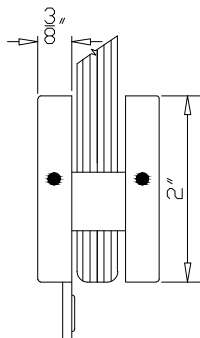
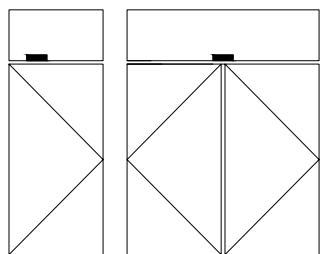
PF-90



SUSPENSION PLATES

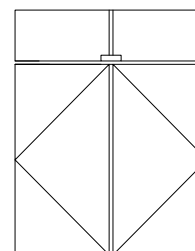
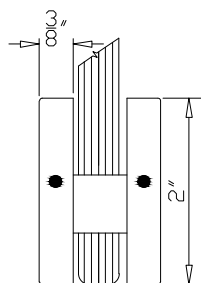
*Single or double door holder
for transom with door stop*

PF-70



*Connection for 2 fixed
panels without stops*

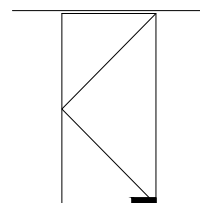
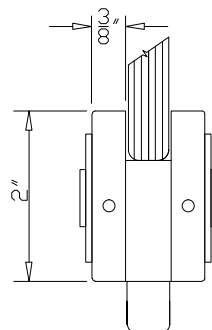
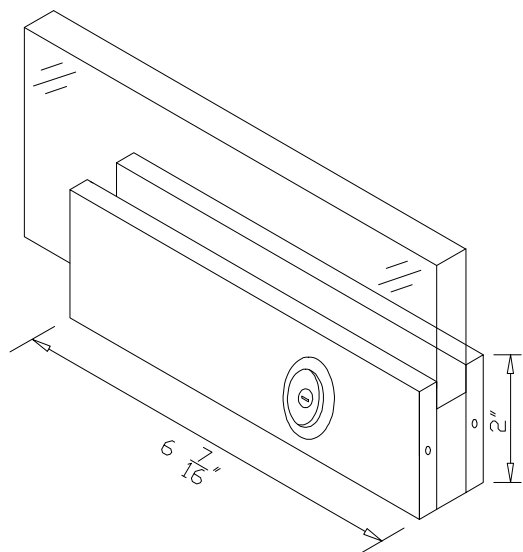
PF-70-2



SUSPENSION PLATES

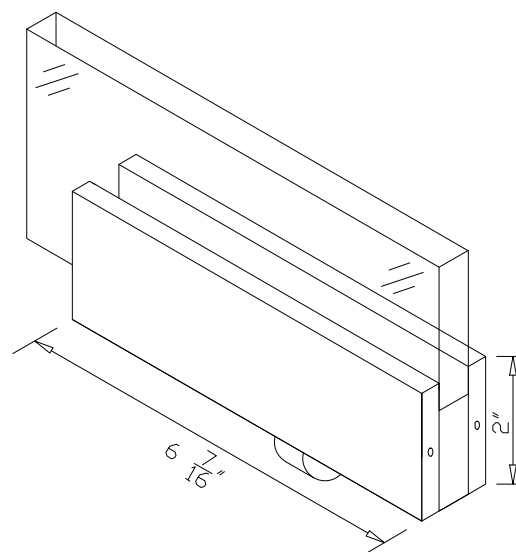
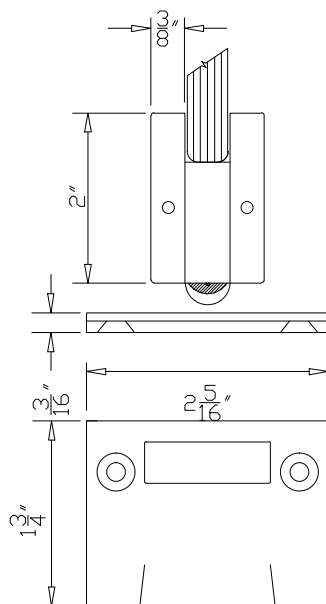
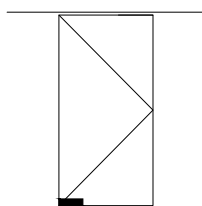
*North American type
bottom lock cylinder*

PF-US10



*Suspension plate with
roller latch and floor plate*

PF-US1015

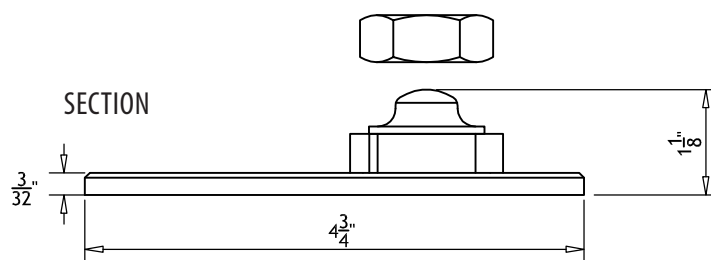
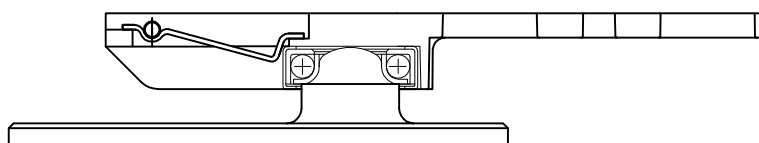


ADJUSTABLE BOTTOM PIVOT

Adjustable bottom pivot

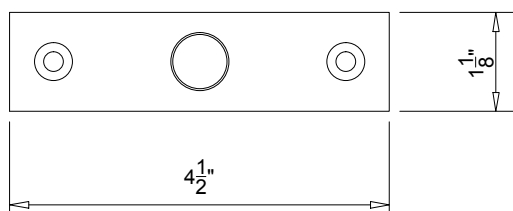
PF-8852

SECTION

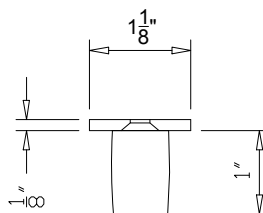


TOP SURFACE PIVOTS

TOP VIEW



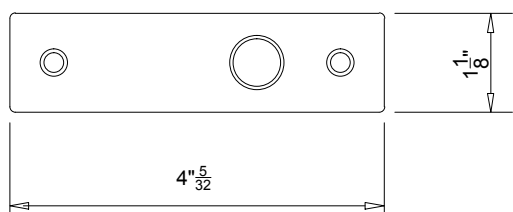
SECTION



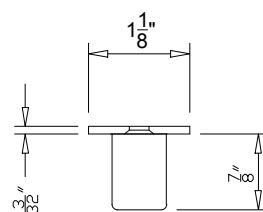
*Top surface
pivots for PF-20*

PF-24

TOP VIEW



SECTION



*Top surface
pivots for PF-121*

PF-120

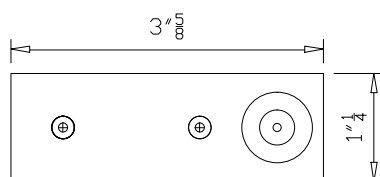
ADJUSTABLE BOTTOM PIVOT

Centered adjustable bottom pivot

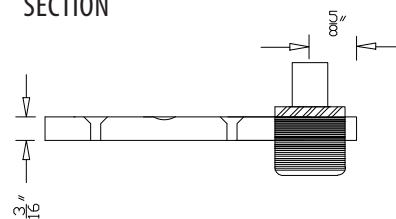
*For a glass door up
to 100 kg (220 lbs)*

PF-106

TOP VIEW



SECTION

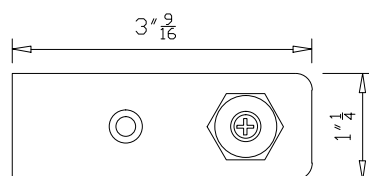


Centered adjustable bottom surface pivot

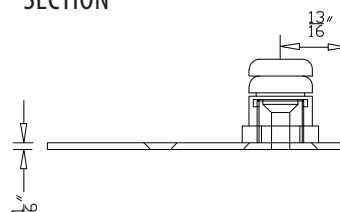
*For a glass door up to
84 kg (185 lbs)*

PF-107

TOP VIEW



SECTION



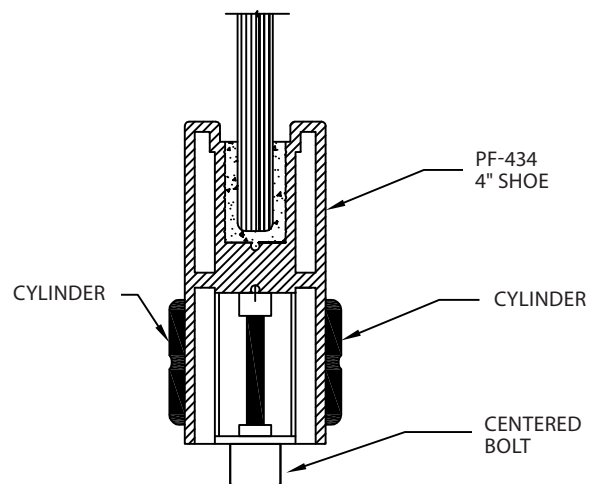
LOCK FOR SWINGING DOORS

*Lock for
swinging doors*

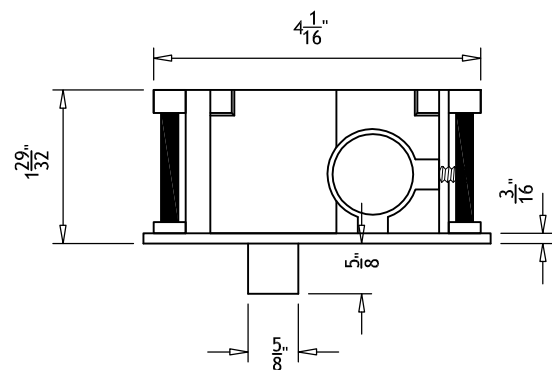
PF-8525



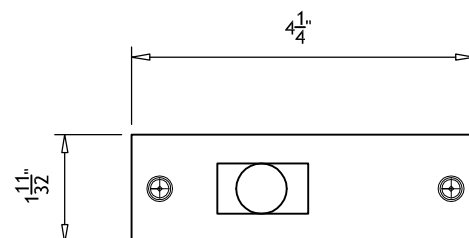
SECTION OF PF-434 SHOE
WITH SWINGING DOOR LOCK



ELEVATION



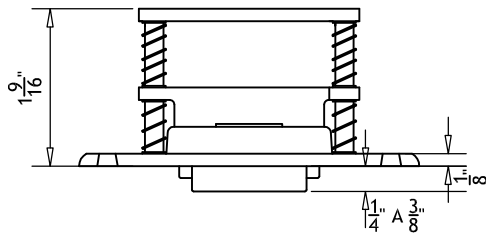
LOCK BOTTOM VIEW



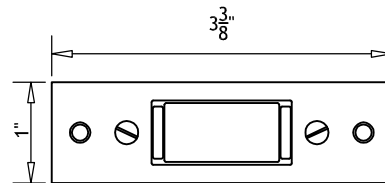
Roller latch

PF-1015

ELEVATION



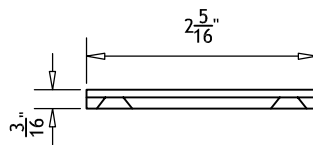
BOTTOM VIEW



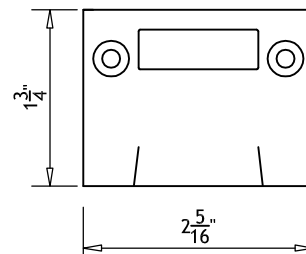
Floor plate

PF-1015

ELEVATION



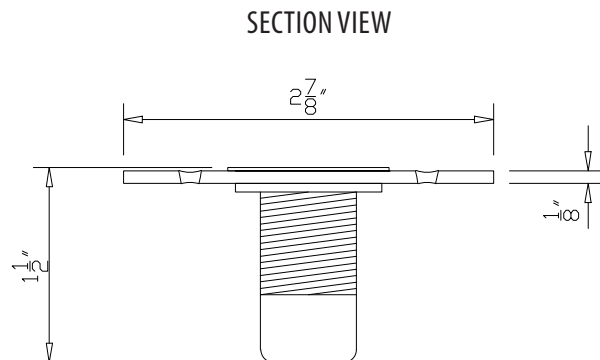
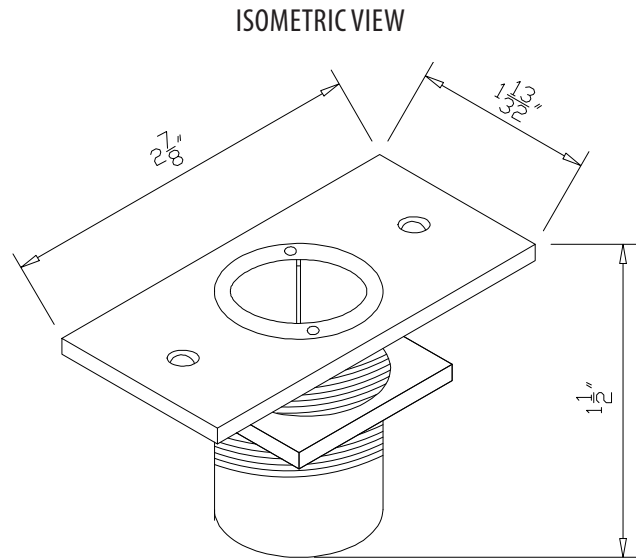
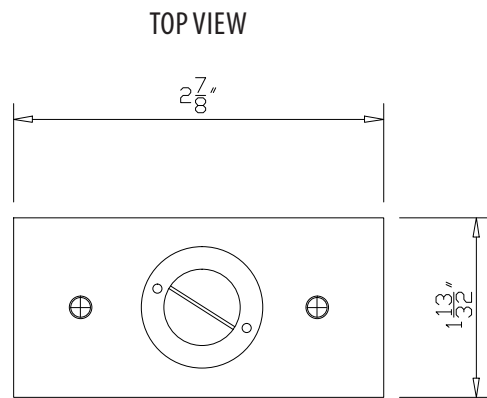
BOTTOM VIEW



DUSTPROOF FLOOR PLATE

Dustproof floor plate

PF-193

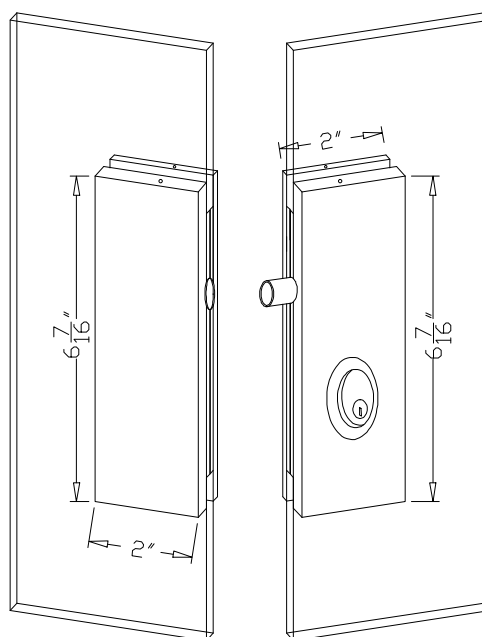
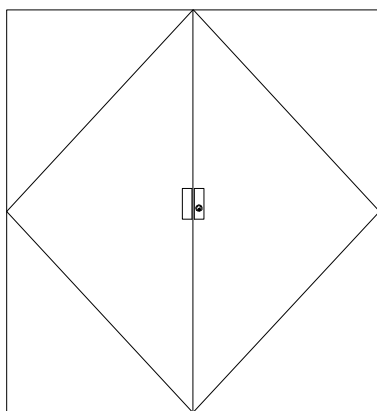


TYPES OF LOCKS AND STRIKE PLATES

Robust central lock and strike plate

Available for 3/8"
to 1/2" glass

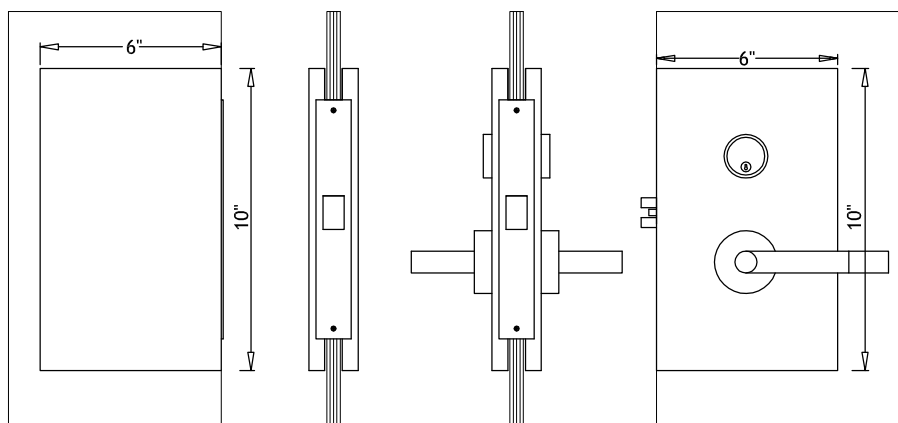
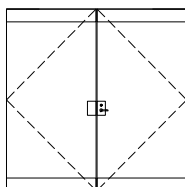
PF-G10



Robust bolt lock

Interior and exterior
column available for
3/8" to 1/2" glass

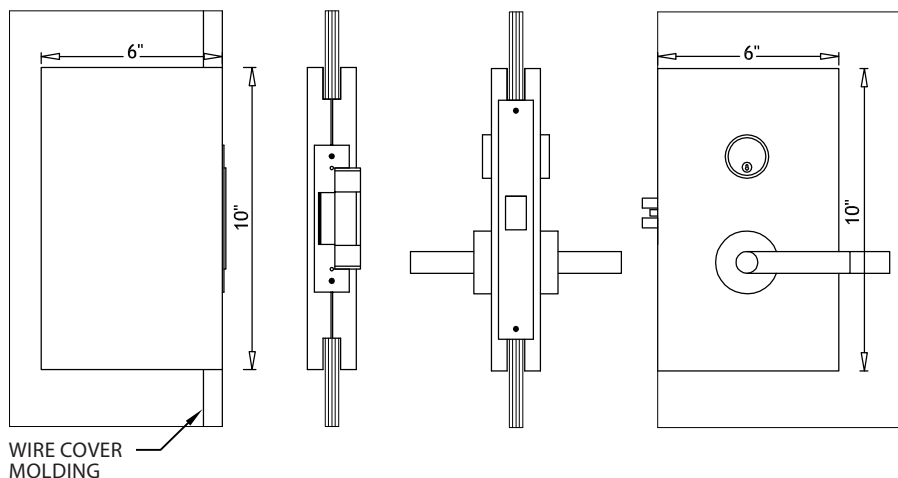
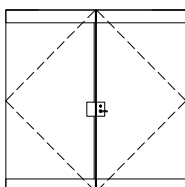
PF-US610



Robust bolt lock

Interior and exterior
column available for
3/8" to 1/2" glass

PF-USE610

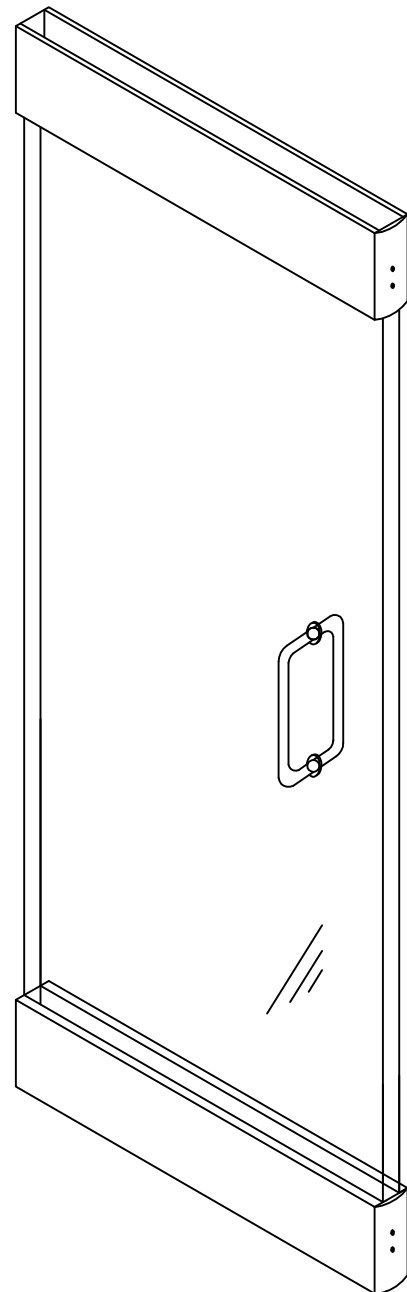
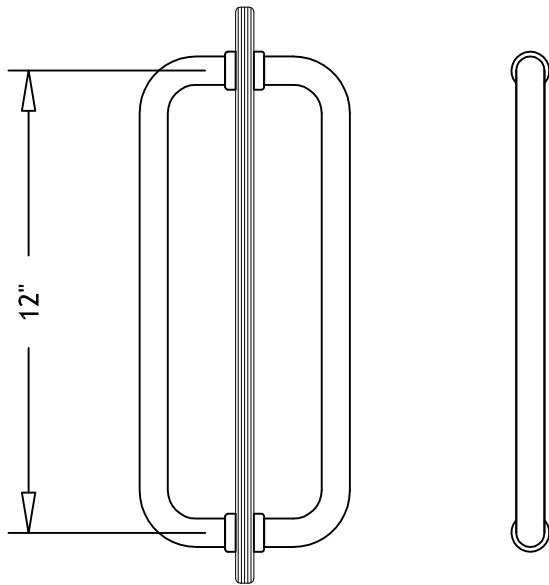


TUBULAR HANDLES

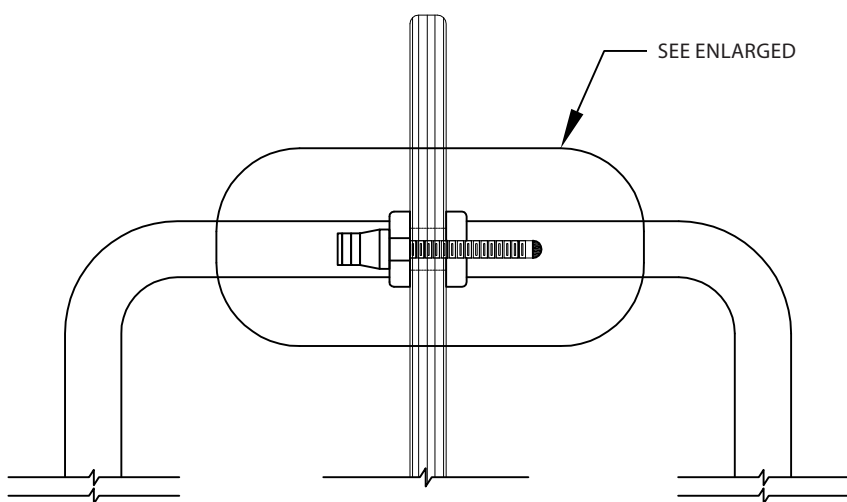
Straight tubular handles, back to back type

*1" diameter tubular handles mounted back to back.
Several lengths and diameters available upon request.*

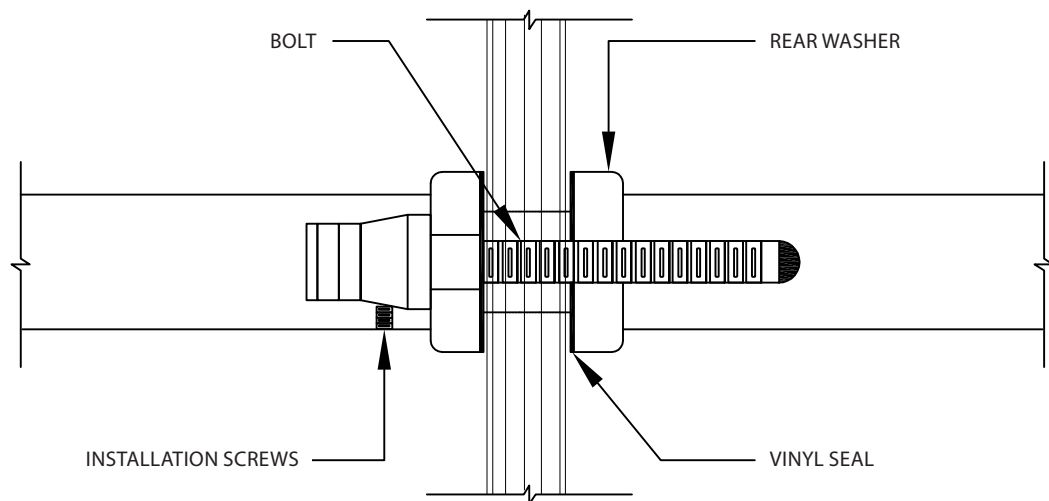
PF-D12X12



TUBULAR HANDLES, BACK TO BACK TYPE



GLASS DOOR FITTING

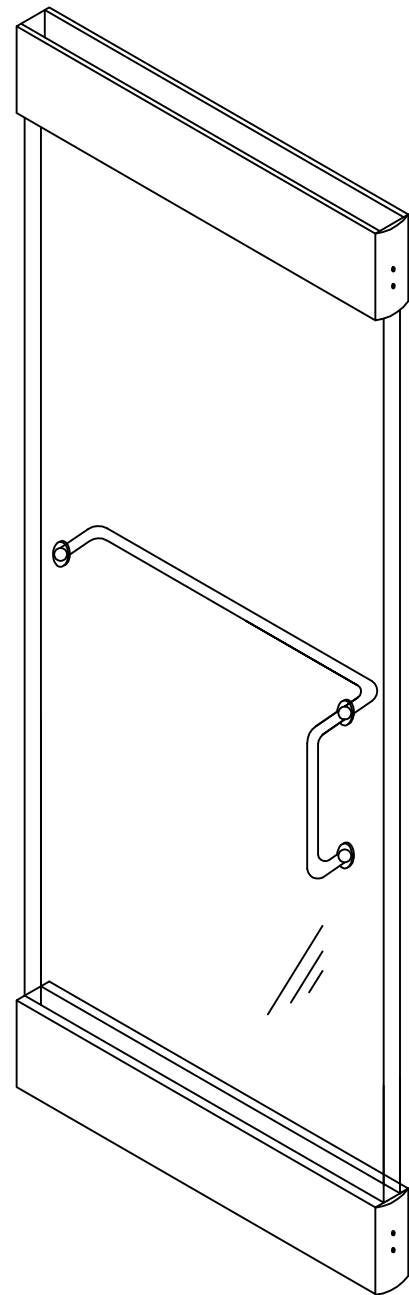
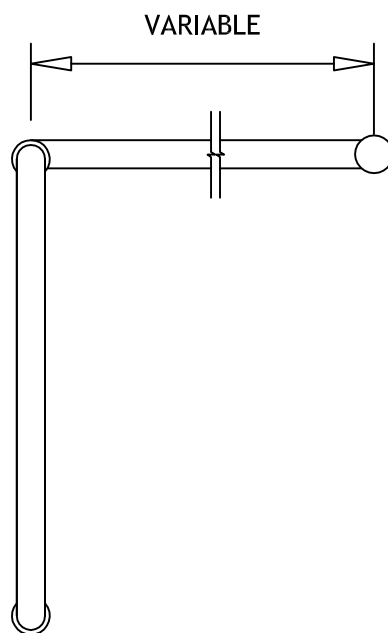
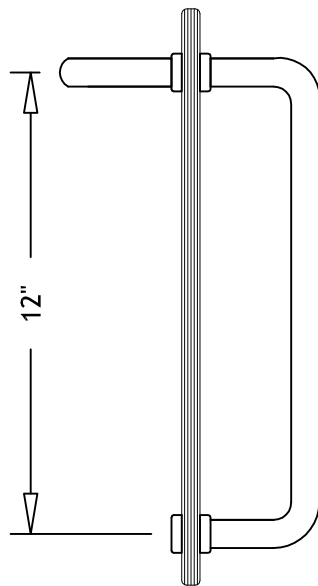


TUBULAR HANDLES

Straight L-shaped tubular handles, back to back type

*Pull handle and push tubular bars set available on order only.
Several lengths and diameters available upon request.*

PF-L12XXX

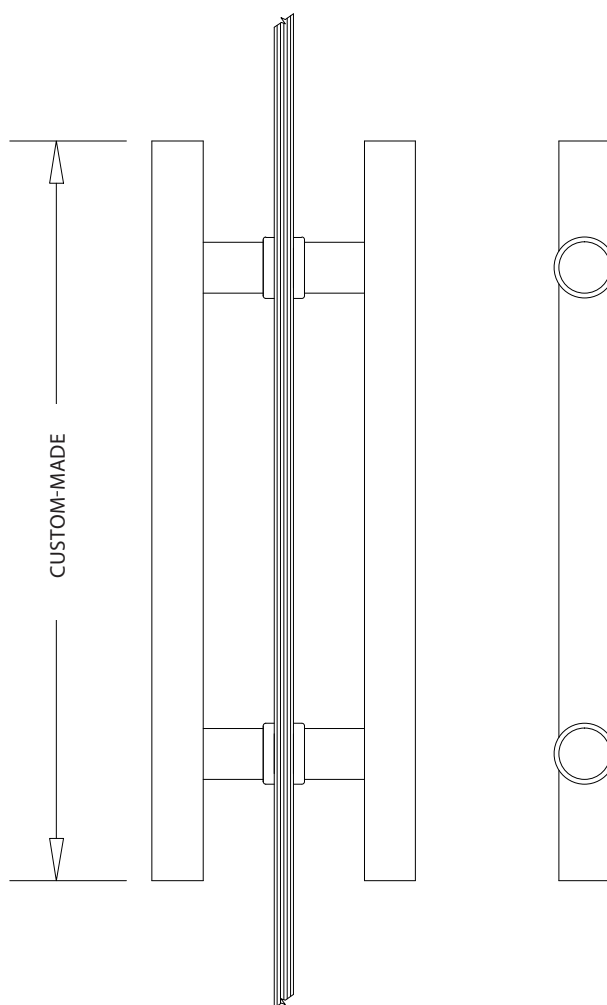
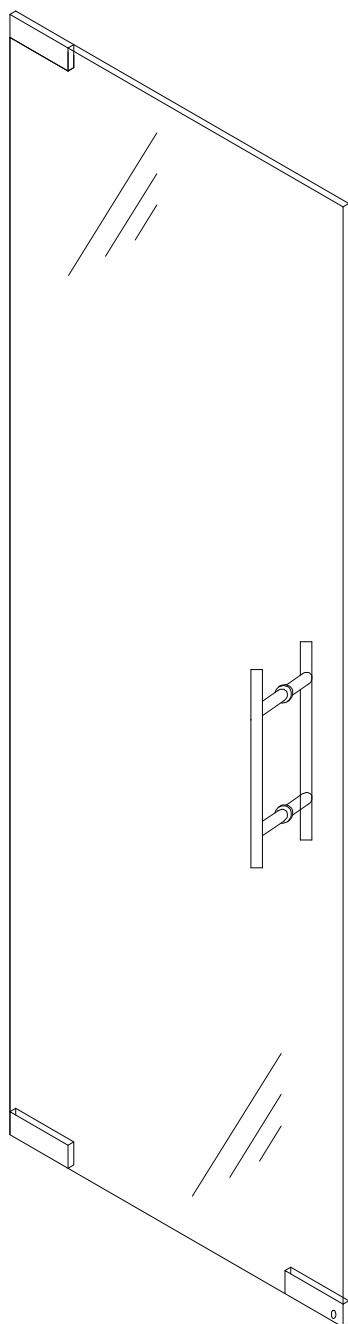


TUBULAR HANDLES

Straight tubular handles ladder type, mounted back to back

*Several lengths and diameters
available upon request.*

PF-6041



General information

SWINGING DOORS MAXIMUM DIMENSIONS DOORS WITH CONTINUOUS SHOES

3/8" (10mm) GLASS - 36" W x 84" H (915mm x 2,134mm)

1/2" (12mm) GLASS - 42" W x 108" H (1,067mm x 2,743mm)

See the stiffeners chart for assembly with doors, transom, lateral space and stiffeners.



INTERIOR OPENING DIRECTION



LHI
left hand
opening
indoors

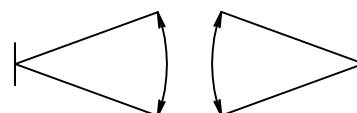
RHI
right hand
opening
indoors



LHO
left hand
opening
outdoors

RHO
right hand
opening
outdoors

EXTERNAL OPENING DIRECTION



LHDA
left hand
double-action

RHDA
right hand
double-action



Our mission

Maintain leadership in the design, production and marketing of a wide range of highly innovative, high-quality products at competitive prices to support our glaziers' growth, while ensuring our employees' commitment, loyalty and skills.

Our values

The commitment to satisfy our customers, proactive continuous improvement, a passion for maintaining team spirit.

**PORTES
FULLUM
.COM**

LES PORTES FULLUM INC.

11485, avenue Philippe-Panneton, Montréal (Québec) H1E 4M1
Phone: 514 722-2010 | Fax: 514 722-4653